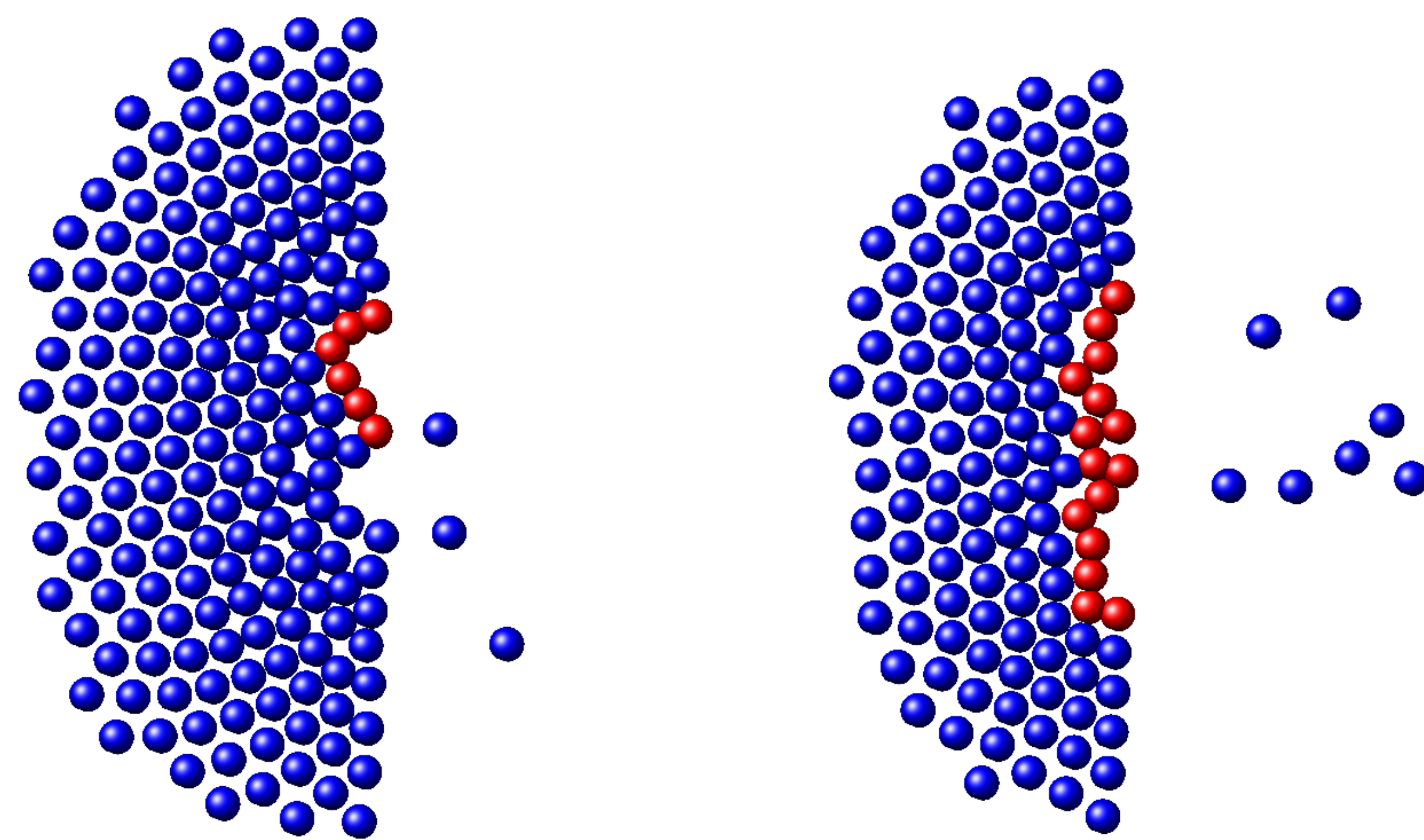


Outline

Our research examines the statistical behaviour of escaping pedestrians when two contiguous exits are available, but placed at different separation distances. We found that the evacuation time can be improved if the separation exceeds a threshold distance. This threshold distance is related to changes in the clogging dynamics close to the doors.

What's about



The Model (SFM):

$$m \frac{d\mathbf{v}}{dt} = \mathbf{f}_d + \mathbf{f}_s + \mathbf{f}_g$$

- \mathbf{f}_d is the desire force
- \mathbf{f}_s is the social force
- \mathbf{f}_g is the sliding friction

Individuals blocking the doors are coloured in red. The room size is $20 \text{ m} \times 20 \text{ m}$ (door width 1.2 m). The desired velocity is $v_d = 4 \text{ m/s}$.

The pressures

Separation distance of 1.5 m.

Separation distance of 5 m.

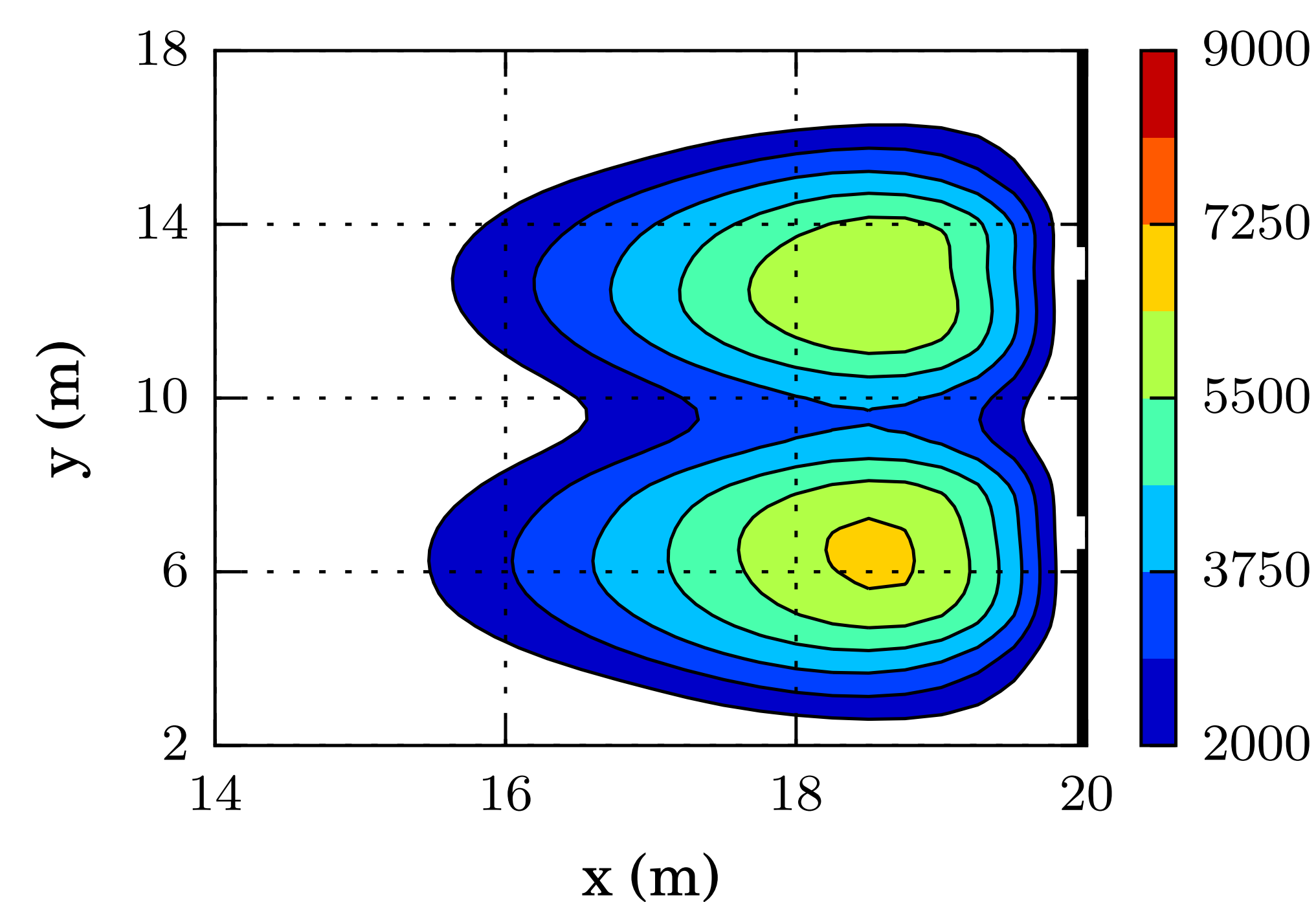
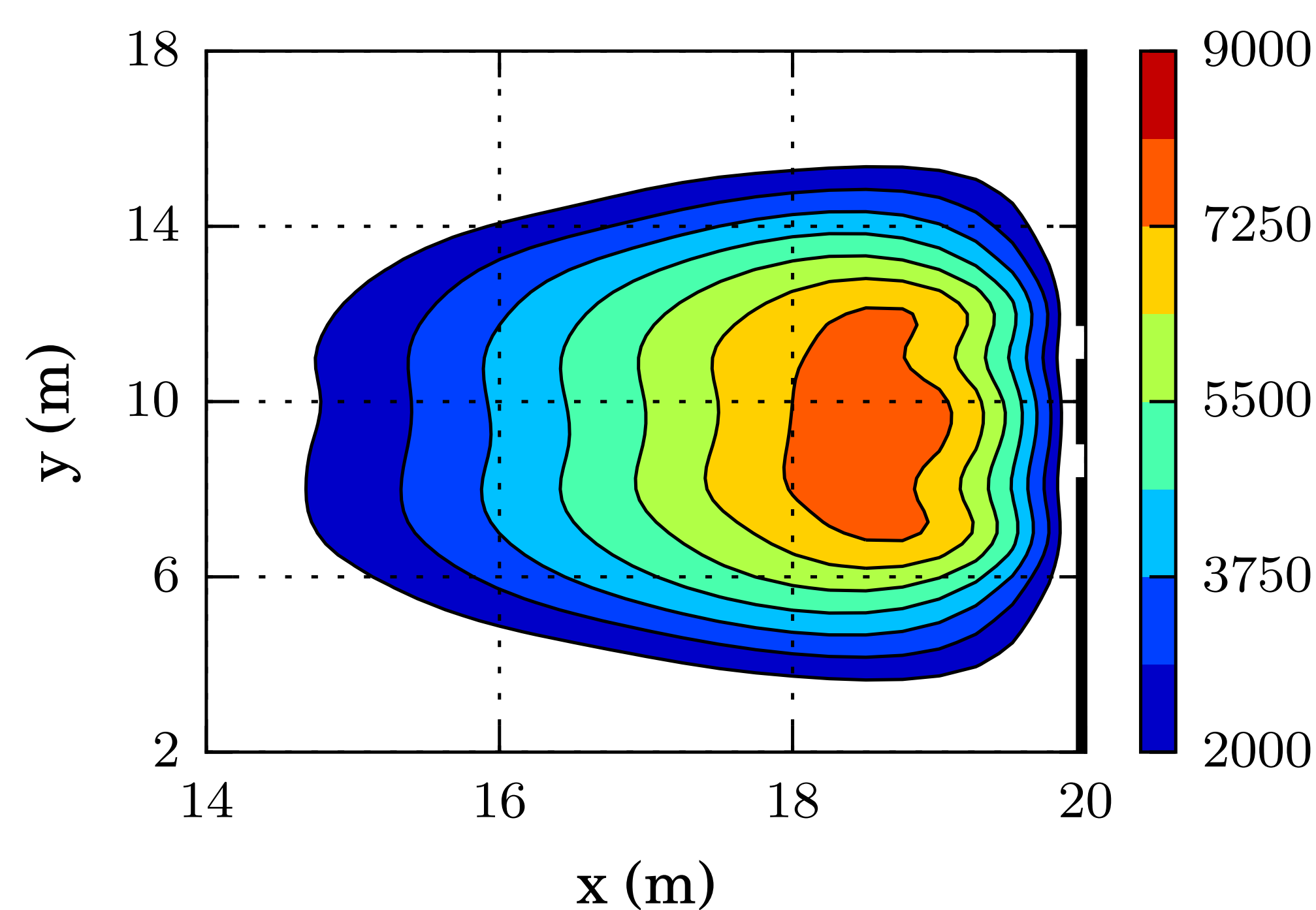


Fig 1. Mean pressures computed from 30 evacuation processes. $v_d = 4 \text{ m/s}$. The scale bar on the right is expressed in N.m units.

Evacuation Time

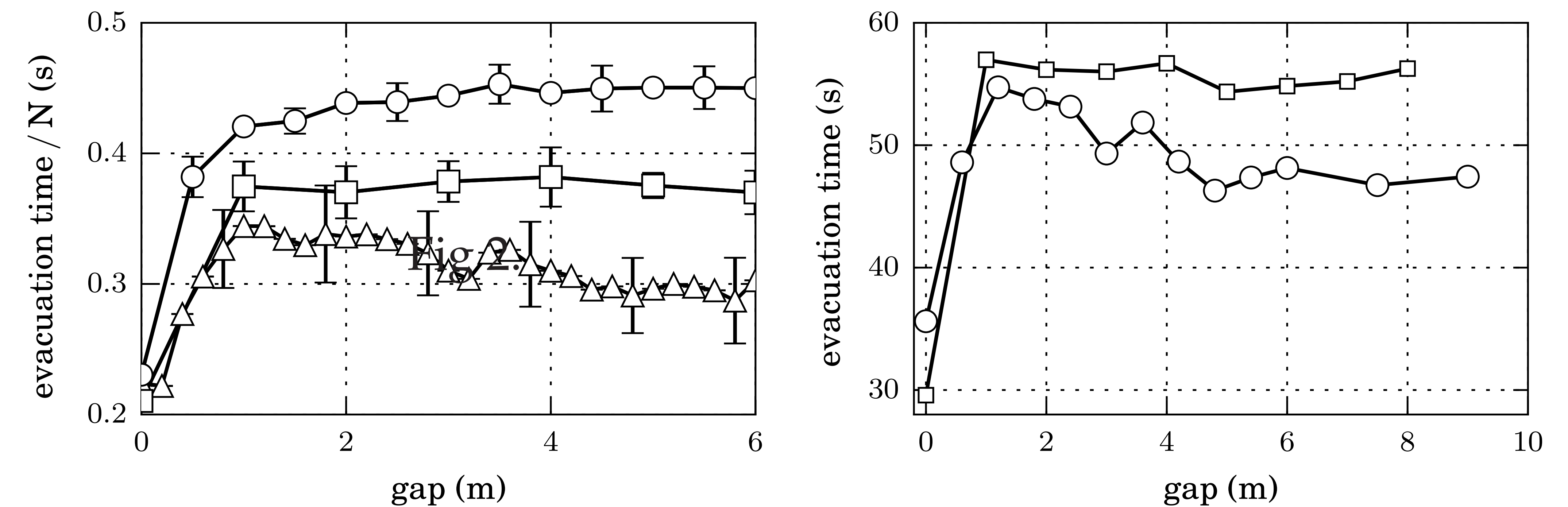


Fig 2. Mean evacuation time for 225 pedestrians computed from 30 evacuation processes. (Left) \triangle corresponds to 225 individuals, \square corresponds to 584 individuals and \circ corresponds to 960 individuals ($v_d = 4 \text{ m/s}$). (Right) \circ 225 individuals and $v_d = 4 \text{ m/s}$. \square 225 individuals and $v_d = 8 \text{ m/s}$.

Conclusions

- ✓ Short separation distances ($d_g \simeq 1.2 \text{ m}$) worsen the evacuation performance for all the explored situations, while larger distances ($d_g > 1.2 \text{ m}$) enhances the evacuation time for relatively small crowds and moderate anxiety levels.
- ✓ As the separation distance approaches 1.2 m (from the null distance), the probability of having blocking structures around each door raises, resembling the situation of two independent doors.
- ✓ Increasing the crowd size (N) or the pedestrian's anxiety level (v_d) slows down the evacuation. Both magnitudes raise the pressure acting on the pedestrians.

Acknowledgements

C.O. Dorso is a main researcher of the National Scientific Technical Research Council (CONICET- Argentina). G. Frank is an assistant researcher of the CONICET. I. Sticco has degree in Physics.